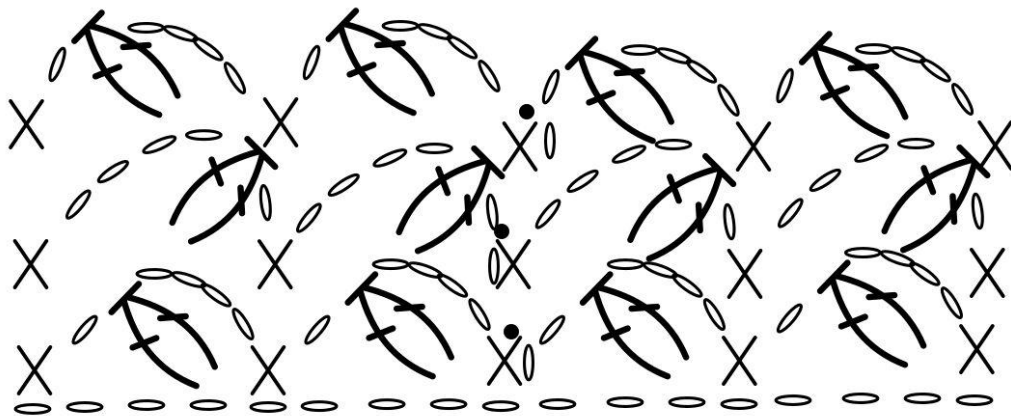


These are my pattern notes for the Lizard at Rest cowl. It is not a full pattern but notes and stitch diagrams and suggestions so that you can make your own unique project with your own, perfect yarn and hook size. I used one hank of fingering

weight rambouillet yarn (it came from my stash and had lost its label) and a 4.25 mm hook. Please adjust your yarn needs to the weight of the yarn you chose and the size of the project you plan to make.

My stitches tend to be a bit tighter than other people's stitches, so please make a swatch (and wash and block it) to decide what hook size works with the yarn you choose, so you get the type of drape and look you desire. I used a fingering weight yarn because of course I did, but I think this cowl would look really cool in a single ply worsted weight or bulky yarn. But if plied yarn is your thing, use that. I did.

Begin with a foundation double crochet row roughly 24 inches long. I used 120 foundation double crochets because that is evenly divisible by 4, as the stitch pattern requires. Join the foundation row with a slip stitch, being careful not to twist it. Then you can begin with the stitch pattern as outlined below.



Basic stitch pattern in the round with turned rows (pattern repeat is 4 stitches)

I do not normally write patterns out in words, but I think this one could be a bit confusing, so I am going to write it out like a traditional crochet pattern. I hope this helps with the diagram.

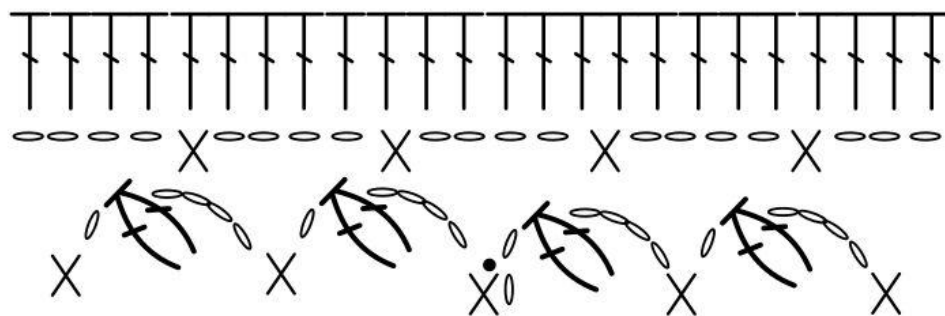
To work in the round, chain a multiple of 4, plus 1 for the turning chain.

Row 1: Work a sc into the second chain; *ch 4, work a 2 dc tog into next ch, ch 1, sk 2 ch, sc in next ch*; repeat ** to end of row, sl st into first sc

Row 2: Turn your work and chain 1; sc into the first sc of the row, ch 4, 2 dc tog into the chain four space from the row below, ch 1, sc into next sc; *ch 4, 2 dc tog into the chain four space from the row below, ch 1, sc into next sc*; repeat ** to end of row; sl st into first sc of row

Repeat row two to length

When you reach the end of your cowl, finish it off with a top border edge to match the bottom. To do this, break the yarn and reattach near one of the double crochet together clusters but in the chain 4 space. Then work the border as outlined in the diagram below. I worked linked double crochets around the chain from the set up row for the border. If you prefer normal double crochets, please do that. Or find a totally different border that makes the project pop for you. Have fun making it your own!



Weave the ends, wash, block and you too can live life as a cozy, resting lizard!